

A group of people in formal attire are socializing on a rooftop terrace. The terrace features a modern, curved glass and metal structure. In the foreground, several people are gathered around high-top tables, some holding drinks. The background shows a large tree and a view of a city skyline. The overall atmosphere is sophisticated and elegant.

# Arden

## EVENTS KIT



# Arden

Perched 51 floors above ground, 1-Arden offers a stunning view of Marina Bay. Host your corporate event at 1-Arden, where every detail is tailored to perfection. With our breathtaking indoor sanctuary and garden embraced by the Singapore skyline, your special day is sure to be unforgettable. Nestled atop Singapore's latest "Eco-friendly" sleek skyscraper in the heart of the city, CapitaSpring. Our experienced team will ensure that every moment is seamless, from the ceremony to the reception.

## **SEATING**

Up to 230 Pax

## **STANDING**

Up to 350 Pax





# KAARLA

WOOD-FIRE GRILL & BAR

## RESTAURANT & BAR

Kaarla Wood-Fire Grill and Bar beckons with its unique blend of Australian cuisine with Japanese influences. Kaarla defines quintessential Australian cooking as a 'cuisine without borders', emphasising Australia's new love affair with Japanese cuisine.

### SEATING

Up to 110 Pax

### STANDING

Up to 170 Pax



# OUMI.

## JAPANESE KAPPO RESTAURANT

With an open kitchen for guests to enjoy the cooking process and interact with the chef, Oumi is a refined Japanese Kappo restaurant led by Head Chef Lamley Chua. Specializing in nose-to-tail cuisine, Oumi reinvents tradition with ingredients sourced from Japan, Australia, Singapore, and the 1-Arden Food Forest. Each dish is meticulously crafted to utilize the season's finest produce.

### SEATING

Up to 30 Pax

### STANDING

Up to 50 Pax





## RESTAURANT & BAR

Nestled within 'The Green Oasis', a spiral mid-air garden that spans four storeys high, Sol & Luna is a lively epicentre of social and work activities located on level 17. Immerse in the Latin-European culture through food and drinks. Re-energise and reconnect with friends at Sol & Luna amidst lush greenery and a unique vantage view within the bistro, at the alfresco terrace, or in 'The Green Oasis'.

Like the synergy between the Sun and Moon, it brings together dishes from the Latin-European region - Italy, France, Portugal and Spain, in a seamless menu of timeless recipes, reinvented with a twist and finesse.

### SEATING

Up to 60 Pax





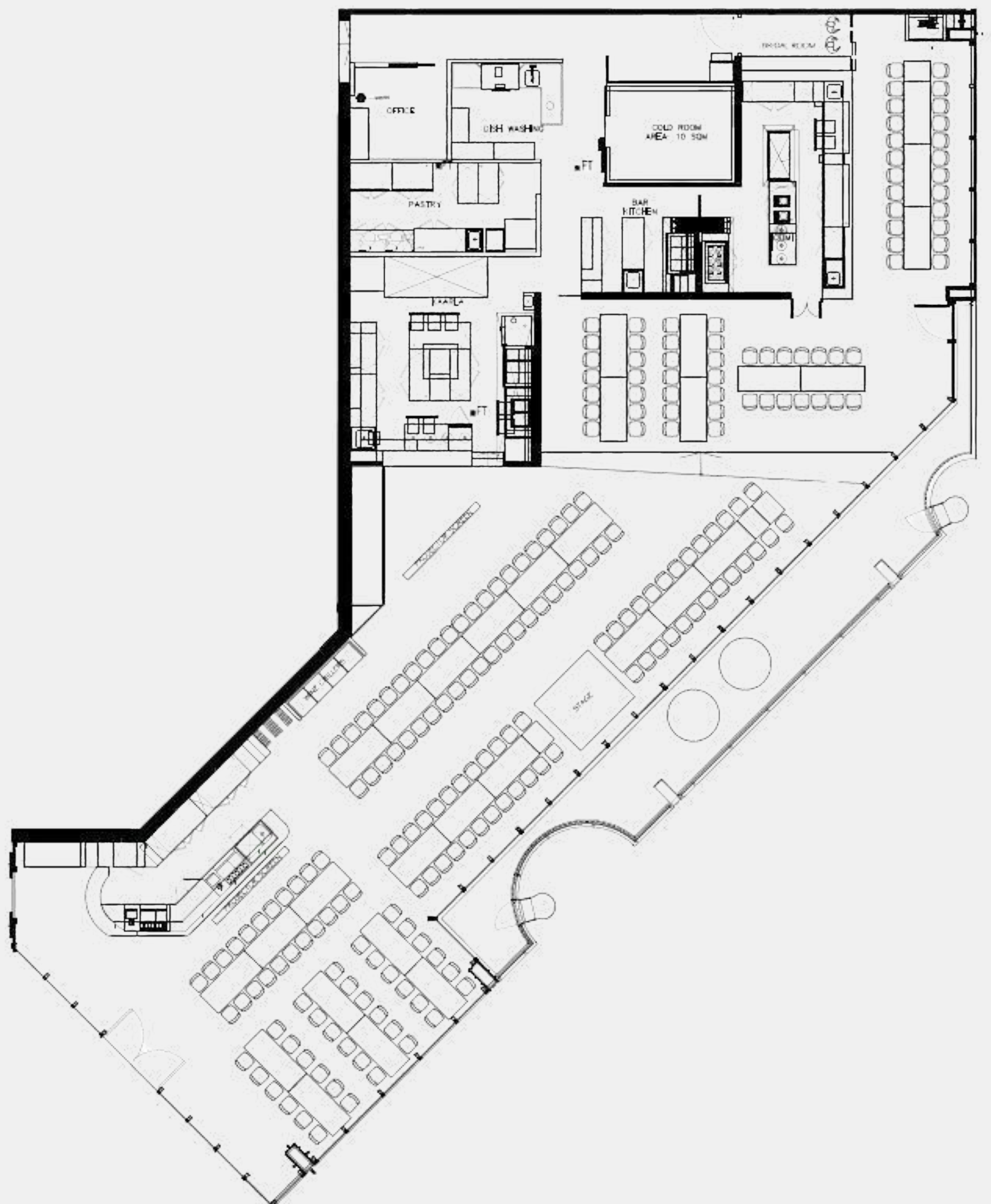


# *Dining*

Take your guests on a gastronomic adventure by hosting them for lunch or dinner at Kaarla and Oumi. Helmed by Executive Chef John-Paul Fiechtner, your guests will be treated to a decadent feast of Australian cuisine with Japanese influences at Kaarla or a refined nose- to-tail Modern Japanese Kappo meal by Head Chef Lamley Chua, tailored specially to your occasion.



# Floorplan







# Fact Sheet

## FACILITIES

Full-Serviced Bar | AV Equipment | Projector & Screen | Bridal Room

## EXTENDED SERVICES

DJs | LIVE Bands | Emcees | Door Gifts | Invitation Cards |  
Cakes | Floral Decor





# LET US BE YOUR BEST HOST

## ADDRESS

88 Market Street, #51-01  
Singapore 048948


## TELEPHONE

+65 8031 4316

## EMAIL

[enquiry@1-arden.sg](mailto:enquiry@1-arden.sg)

 [@ 1arden.sg](https://www.instagram.com/1arden.sg)

 [@ 1Ardensg](https://www.facebook.com/1Ardensg)

